

Synchronizing your Pocket PC over Bluetooth, by Belkin



belkin.com

Synchronizing your Pocket PC over Bluetooth Quick Setup Guide

For HP IPAQ Pocket PC Models: H1940, H1945, H2210, H2215, H5450,
H5455, H5550, H5555 also works with other Pocket PCs using
Widcomm BTCE ver.1.3.x

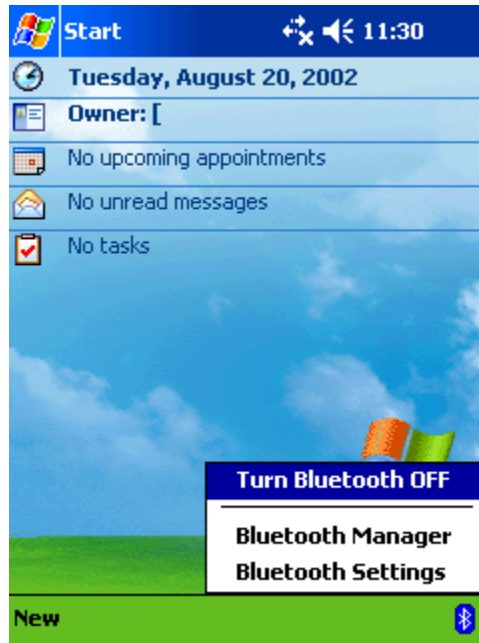
Use with Belkin Bluetooth PC Adapters: F8T001, F8T002 and F8T003



SECTION 1: Pairing your Pocket PC to your Computer

Step 1: Tap on the **Bluetooth icon** located in the lower right corner of the Today Screen. Select Bluetooth Manager.

*Note: Be sure that your Bluetooth Radio is turned **ON**.*



Step 2: Tap on the **Tools** located in the menu bar located at the bottom of your screen. Then select **Paired Devices**.

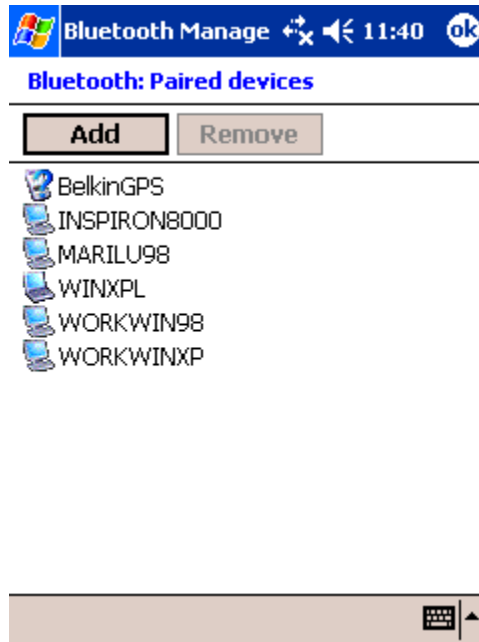


Tap New > Connect!
to access other devices via Bluetooth

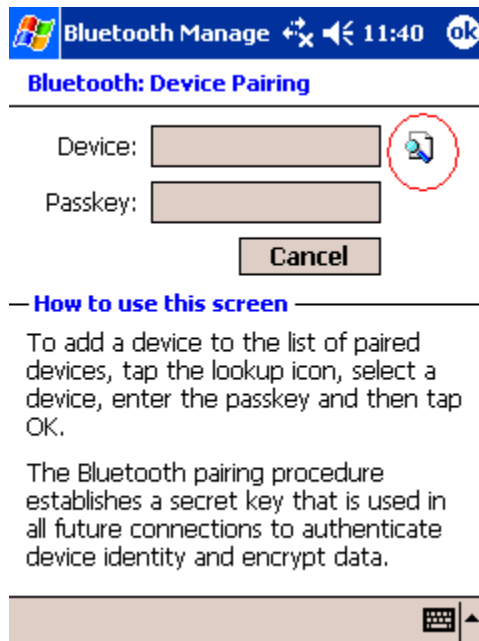


Synchronizing your Pocket PC over Bluetooth, by Belkin

Step 3: Tap on the **Add** button.

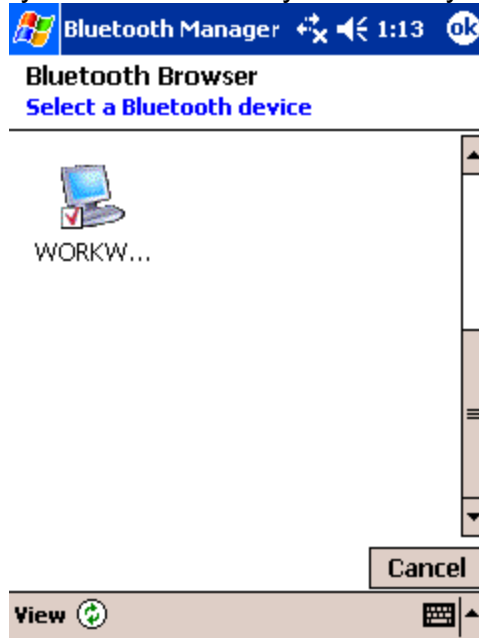


Step 4: Tap on **Search icon** located to the right of the **Device** text box. This will begin a search for all Bluetooth devices in your area.

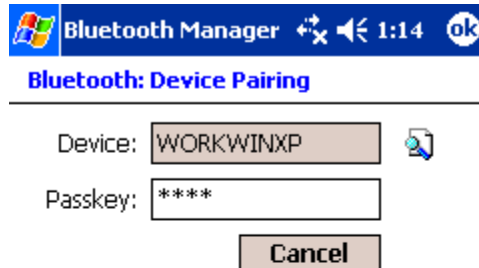


Synchronizing your Pocket PC over Bluetooth, by Belkin

Step 5: Tap on the devices you would like to synchronize your Pocket PC to.



Step 6: Enter a **Passkey** in the Passkey Text Box and tap “OK”. For example “0000” or “1234.” The passkey could be any alphanumeric number you want.



— How to use this screen —

To add a device to the list of paired devices, tap the lookup icon, select a device, enter the passkey and then tap OK.

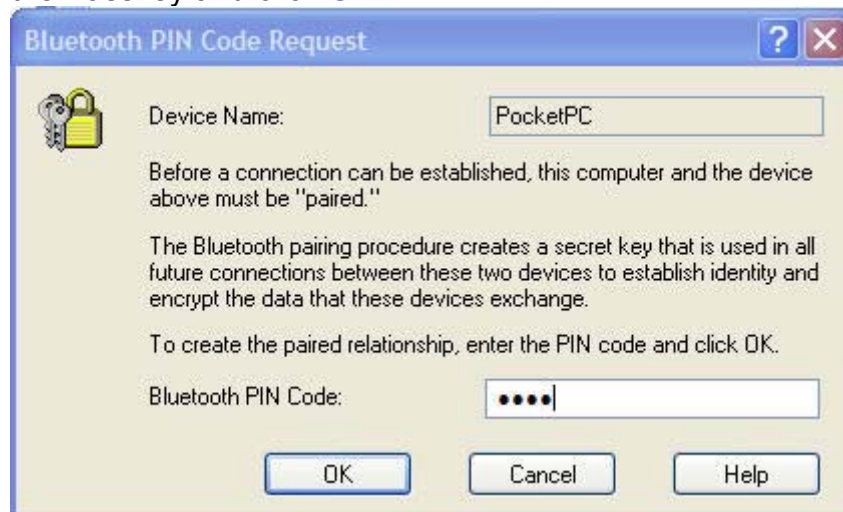


Synchronizing your Pocket PC over Bluetooth, by Belkin

Step 7: Check your Computer. You will be prompted to enter the same Passkey on the Bluetooth computer you are trying to Synchronize to.

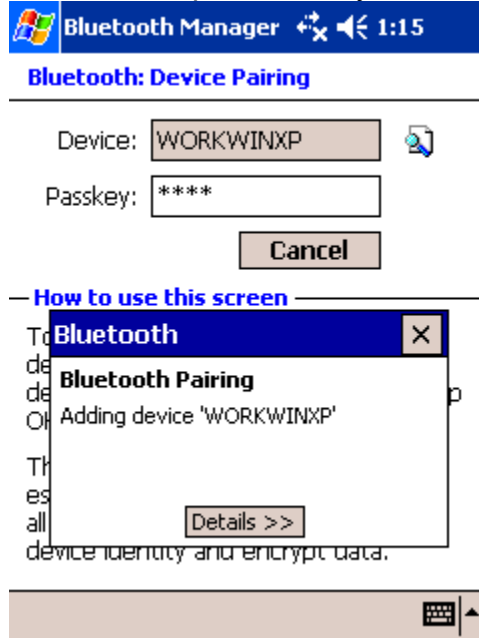


Step 8: Enter the Passkey and click **OK**.



Synchronizing your Pocket PC over Bluetooth, by Belkin

Step 9: Your Pocket PC should now be paired with your computer.

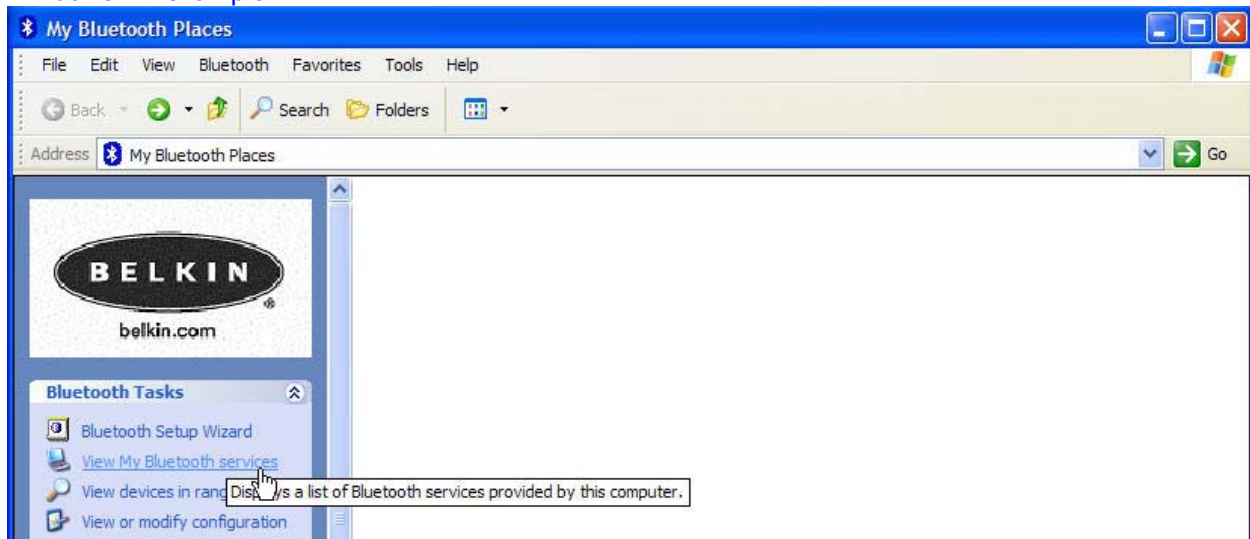


Step 10: Your Pocket PC should now be paired with your computer.

SECTION 2: Configuring your COM Port

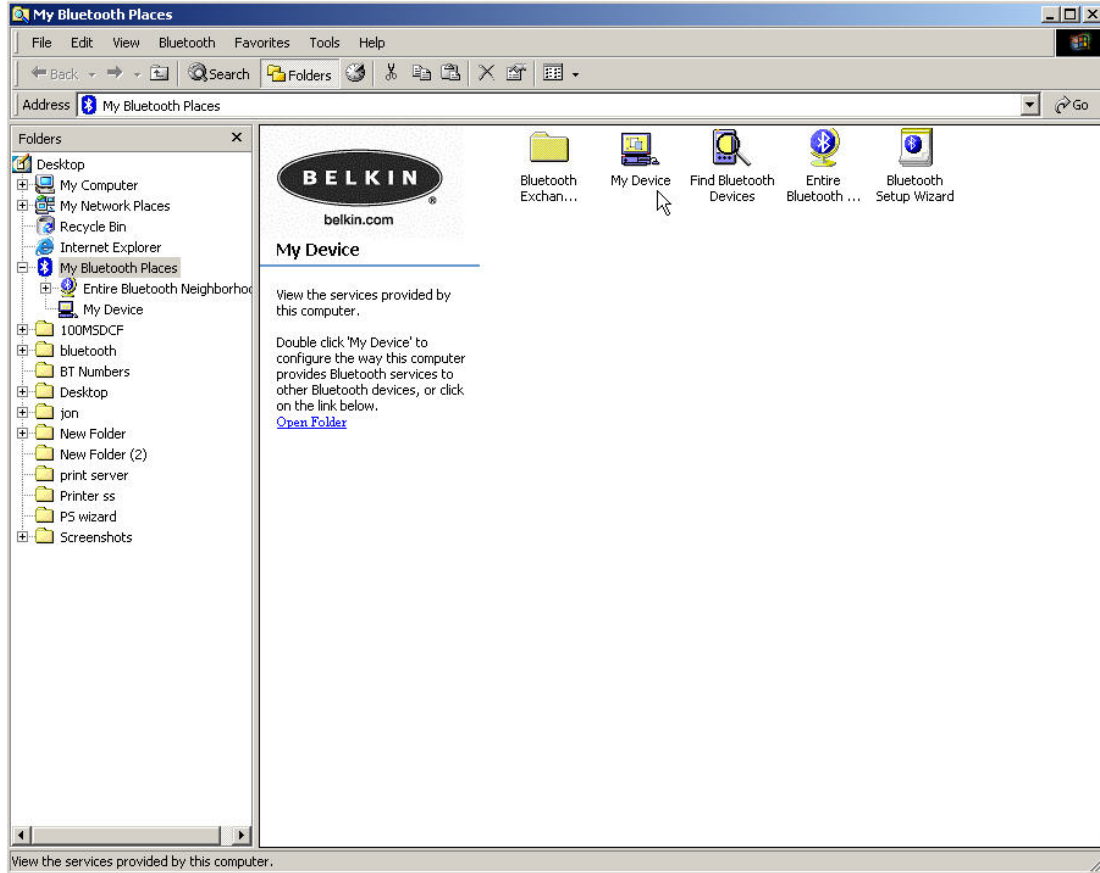
Step 1: Go to My Bluetooth Places and Click on "[View My Bluetooth Places](#) (Windows XP)" or double click on "[My Device](#)"(for Windows 98, ME or 2K).

Windows XP example

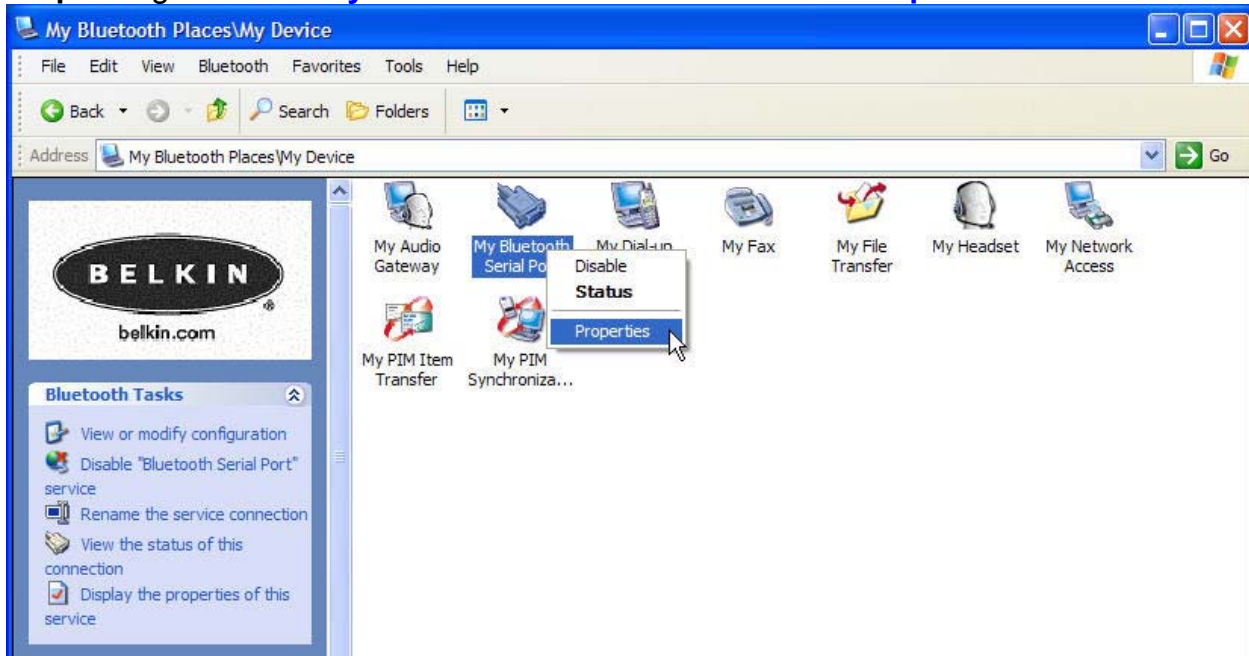


Synchronizing your Pocket PC over Bluetooth, by Belkin

Windows 98SE and 2000 example



Step 2: Right click on **My Bluetooth Serial Port** and select **Properties**.

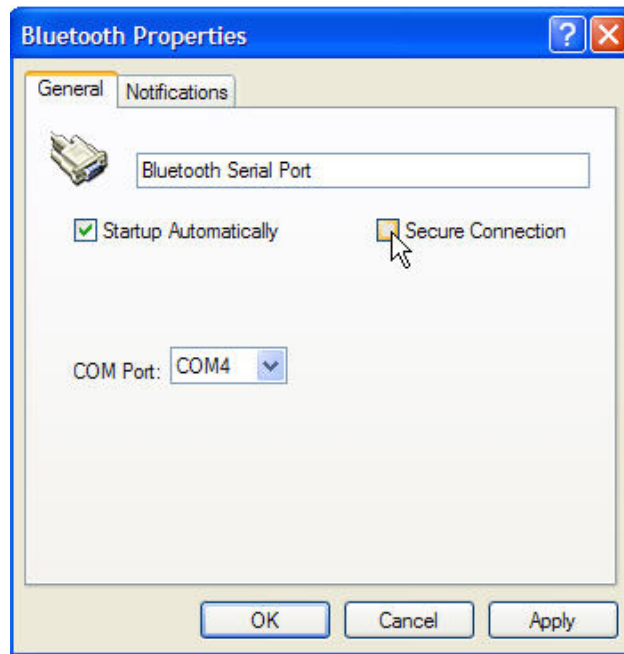


Synchronizing your Pocket PC over Bluetooth, by Belkin

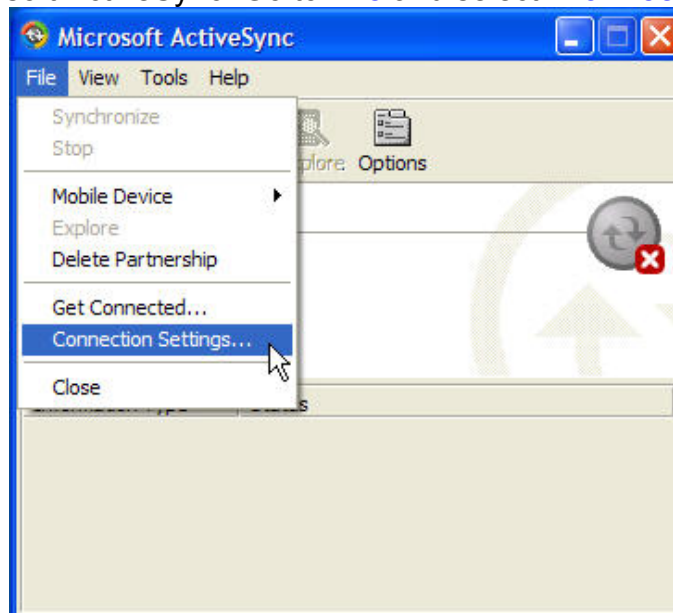
Step 3: Make sure there is a check mark next to **Startup Automatically**.

You may want to uncheck **Secure Connection** for faster syncing. This will disable the Passkey session every time you try to perform a Hot Sync Session. If you would like to maintain security, please leave this check box checked.

Make Note of the COM Port. (In this example, Com 4 is set for the Computer)



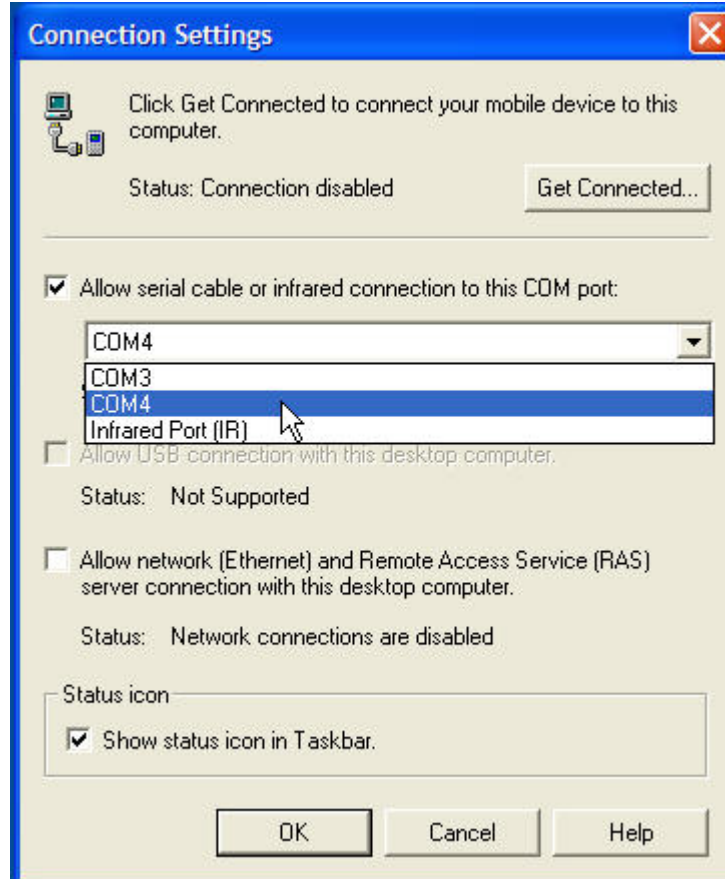
Step 4: Open Microsoft ActiveSync. Go to **File** and select “**Connection Settings...**”



Synchronizing your Pocket PC over Bluetooth, by Belkin

Step 5: Make sure that “**Allow serial cable or infrared connection to this COM Port**” is checked. Click on the drop-down menu and select the COM port which appeared in **Step 3** above.

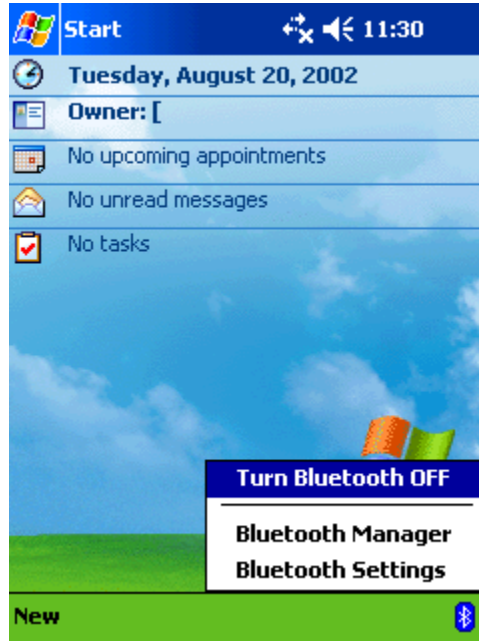
“**Allow for USB connection...**” and “**Allow network (Ethernet)...**” should remain unchecked.



SECTION 3: Establishing an Active Sync Connection

Step 1: Tap on the **Bluetooth icon** located in the lower right corner of the Today Screen. Select Bluetooth Manager.

*Note: Be sure that your Bluetooth Radio is turned **ON**.*



Step 2: Tap on the **Bluetooth icon** located in the bottom menu to initiate the Bluetooth Connection Wizard.



Tap New > Connect!
to access other devices via Bluetooth



Synchronizing your Pocket PC over Bluetooth, by Belkin

Step 3: Scroll down and select **ActiveSync via Bluetooth**.



Step 4: Tap on the **Next**.



Synchronizing your Pocket PC over Bluetooth, by Belkin

Step 5: Tap on the **Next**.



Step 6: Tap inside the center box to choose a device.



Synchronizing your Pocket PC over Bluetooth, by Belkin

Step 7: Select the computer you previously paired in Section 1, Step 5.



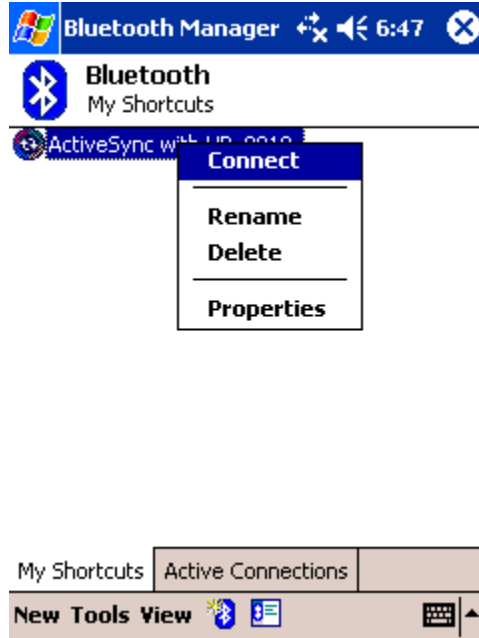
Step 8: Tap on **Finish**.



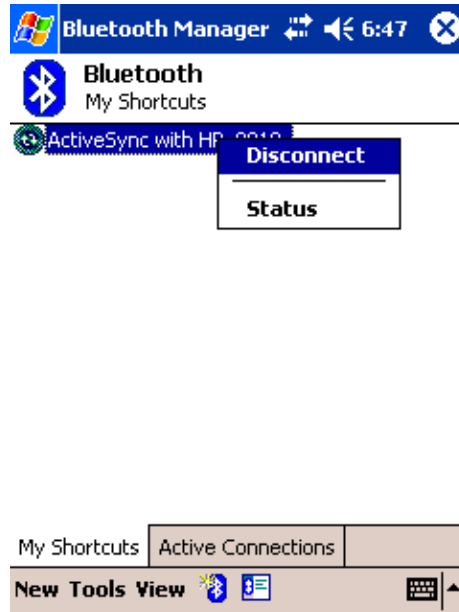
Synchronizing your Pocket PC over Bluetooth, by Belkin

Step 9: Tap and Hold the Active Sync short cut that was created for your computer and select **Connect**.

Configuration is now complete. You should now see an Active Sync Session initiate between your Pocket PC and the paired computer.



To Disconnect: Tap and Hold the Active Sync short cut created for your computer and select **Disconnect**.



To Re-connect: Tap and Hold the Active Sync short cut in Bluetooth Manager on your Pocket PC device.